



Strainstall

THE WORLD of **load measurement and stress analysis**

## Product Load Measuring Pins



Load Measuring Pins are the simplest and most reliable method of measuring loads. They can be used in a great number of situations, including the most severe of environments - heavy industry, mining, offshore, subsea and aerospace. They can be incorporated easily and economically into the load path by replacing any existing load bearing pins. Typically they are used in rope sheaves, fairleads, winches, cranes, mooring hooks and anchorages.

- **Weighing and load measurement**
- **Easy to install new or retrofitted**
- **Waterproof and sealed to IP67 standard**
- **Single, dual or redundant bridges**
- **Suitable for use in Hazardous Areas**
- **Special application options**

Having manufactured in excess of 2000 different variants of load measuring pins, with diameters up to 580mm, Strainstall UK are justifiably proud of their ability to engineer a pin to meet the most demanding of situations. Strainstall's expertise in load measuring pin design is unequalled throughout the World.

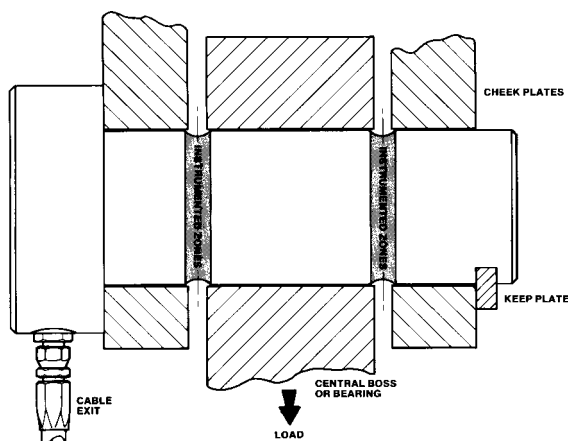
As with all load cells, load pins can be used with Strainstall's range of standard and special instrumentation packages. Load cells and systems are supplied with full calibration certification.

## Load Measuring Pin Specification – Typical Values

Rated Load	0.5 to 1200+ tonne
Proof Load	150% of rated load
Safe Side Load	100% of rated load
Factor of Safety	4 – 6 depending on requirement
Rated Output	1.3 – 2mV/V
Recommended Excitation Voltage	10V
Maximum Excitation Voltage	15V
Bridge Resistance	700 ohm nominal
Insulation Resistance	>2G.Ohm @ 100V
Maximum Operating Temperature Range	-20 to +80°C. standard -40 to +120°C. to order
Electrical Connection	Screened signal cable to suit the application. Red +ve Supply. Green +ve Signal. Blue -ve Supply. Yellow -ve Signal.

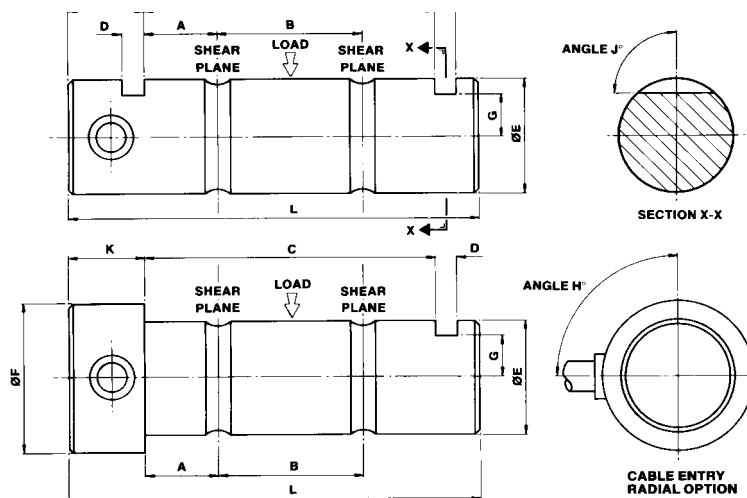
PLEASE ENQUIRE WITH APPLICATION DETAILS.

Typical minimum diameters for a range of load ratings are:								
Load (tonne)	5	10	20	50	100	200	500	1000
Diameter (mm)	28	35	48	70	96	130	200	290



**Typical Installation Arrangement**

### Design Details



Due to continuous development, Straininstall UK reserve the right to change specification without notice.



STRAININSTALL's team of experienced engineers operates from offices in Cowes, Bath and Aberdeen (UK) and Tønsberg (Norway). For further information, please contact:

**Straininstall UK Ltd.**  
9/10 Mariners Way  
Cowes  
Isle of Wight PO31 8PD  
United Kingdom

Tel: +44(0)1983 203600  
Fax: +44(0)1983 291335  
Email: [sales@straininstall.com](mailto:sales@straininstall.com)

[www.straininstall.com](http://www.straininstall.com)